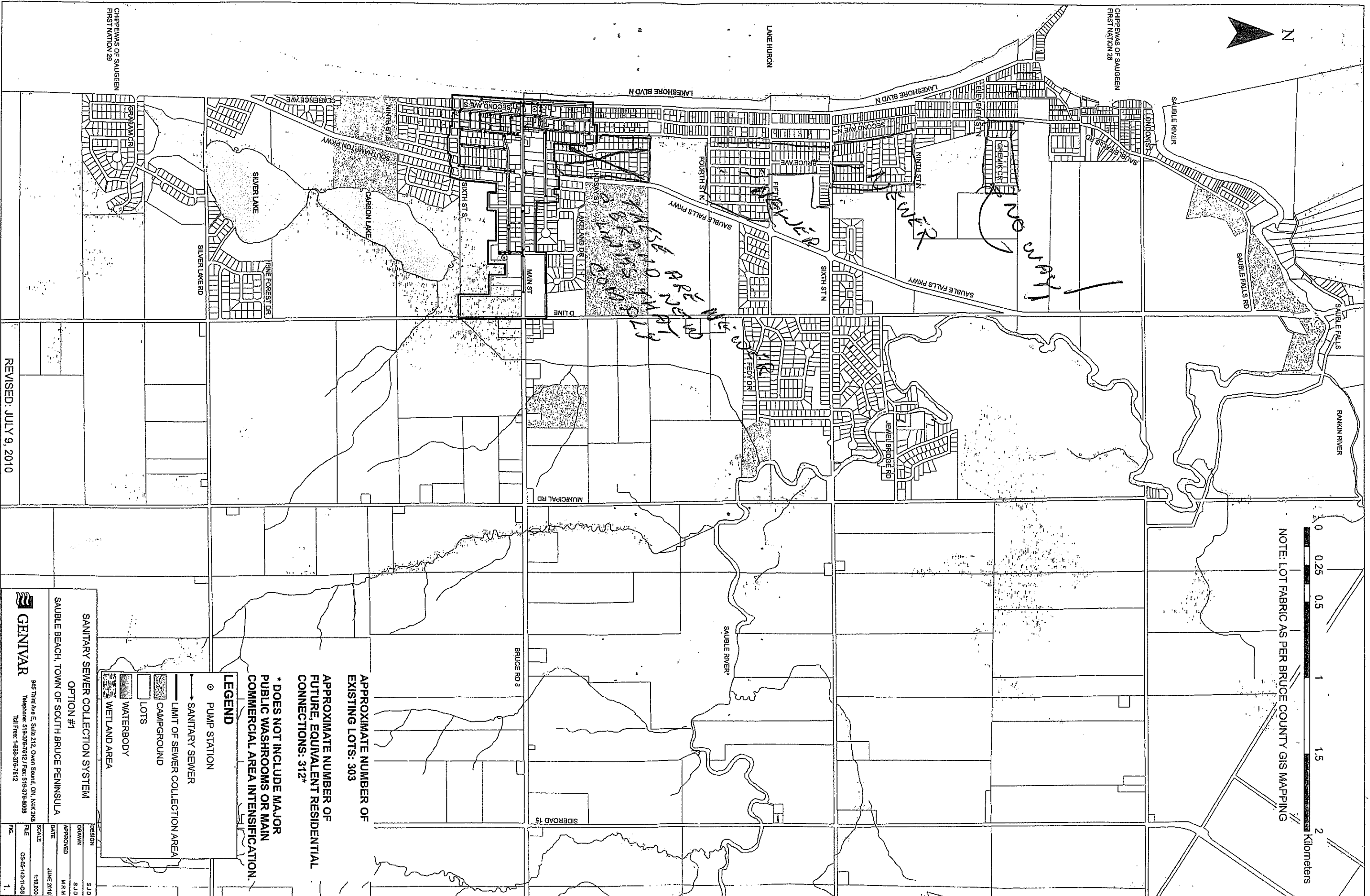




NOTE: LOT FABRIC AS PER BRUCE COUNTY GIS MAPPING



APPROXIMATE NUMBER OF EXISTING LOTS: 303  
APPROXIMATE NUMBER OF FUTURE EQUIVALENT RESIDENTIAL CONNECTIONS: 312\*

\* DOES NOT INCLUDE MAJOR PUBLIC WASHROOMS OR MAIN COMMERCIAL AREA INTENSIFICATION.

**LEGEND**

- PUMP STATION
- SANITARY SEWER
- ▭ LIMIT OF SEWER COLLECTION AREA
- ▨ CAMPGROUND
- ▭ LOTS
- ▭ WATERBODY
- ▭ WETLAND AREA

**SANITARY SEWER COLLECTION SYSTEM  
OPTION #1**

SAUBLE BEACH, TOWN OF SOUTH BRUCE PENINSULA

**GENIVAR**  
 945 Third Ave E, Suite 212, Omemeg Sound, ON, N4K 2M6  
 Telephone: 519-375-7812 / Fax: 519-375-8008  
 Tel/Fax: 1-888-375-7812

DESIGN	S.J.D.
DRAWN	S.J.D.
APPROVED	M.R.N.
DATE	JUNE 2010
SCALE	1:10,000
FILE	05-05-142-11-05
PG.	1.

REVISED: JULY 9, 2010

CHIPPÉWAS OF SAUGEEN  
FIRST NATION 29